

## VOLUME CONTROL INSERT REFERENCE GUIDE FOR COMMON DAIRY GALLON MOLDS

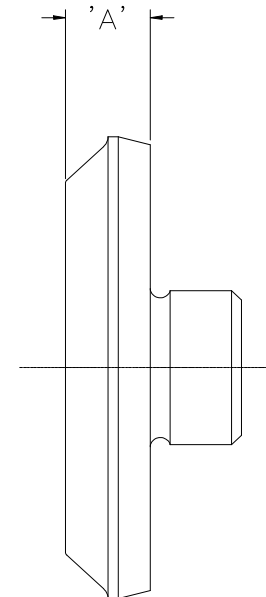
VOLUME DISPLACEMENT PER INSERT (OUNCES)	"A" DIMENSION (IN INCHES)	AKS PART NUMBER	UNILOY® PART NUMBER
0.000	0.251	60000	80005-324 / 55001
0.125	0.316	60001	55038
0.250	0.351	60002	80005-575 / 55016
0.375	0.385	60003	55017
0.500	0.422	60004	1019-2-2 / 55018
0.625	0.455	60005	55025
0.750	0.504	60006	1019-2-3 / 55023
0.875	0.550	60007	1019-2-4 / 55020
1.000	0.600	60008	1019-2-6 / 55022
1.125	0.654	60009	1019-2-7 / 55015
1.250	0.713	60010	80005-564 / 55019
1.375	0.781	60011	1019-2-9 / 55004
1.500	0.858	60012	80005-565 / 55024
1.625	0.952	60013	1019-2-11
1.750	1.073	60014	1019-2-12 / 55021
1.875	1.264	60015	1019-2-13 / 55035
<b>LOCKING TIP</b>	<b>NONE</b>	<b>60016</b>	<b>80005-323 / 55005</b>

### NOTES:

The volume insert sketch below shows the "A" dimension which is referenced on the chart.

The part numbers listed on this chart are for plain volume inserts. Your custom engraving can be added to any of these volume inserts for an additional time and material charge.

If you require a volume displacement which is not listed, please contact us for assistance.



**VOLUME CONTROL INSERT REFERENCE GUIDE  
FOR COMMON DAIRY HALF GALLON MOLDS**

<b>VOLUME DISPLACEMENT PER INSERT (OUNCES)</b>	<b>"A" DIMENSION (IN INCHES)</b>	<b>AKS PART NUMBER</b>	<b>UNILOY® PART NUMBER</b>
0.000	0.251	60017	55008/1019-2-17
0.125	0.300	60018	55043
0.250	0.364	60019	55042/1019-2-31
0.375	0.430	60020	55041/1019-2-19
0.500	0.506	60021	55027/1019-2-22
0.625	0.597	60022	1019-2-24
0.688	0.635	60027	55009/1019-2-25
0.750	0.715	60023	55036/1019-2-26
0.875	0.892	60024	1019-2-28
1.000	1.190	60025	1019-2-33
<b>LOCKING TIP</b>	<b>NONE</b>	<b>60026</b>	<b>55006/853252</b>

**NOTES:**

The volume insert sketch below shows the "A" dimension which is referenced on the chart.

The part numbers listed on this chart are for plain volume inserts. Your custom engraving can be added to any of these volume inserts for an additional time and material charge.

If you require a volume displacement which is not listed, please contact us for assistance.

