





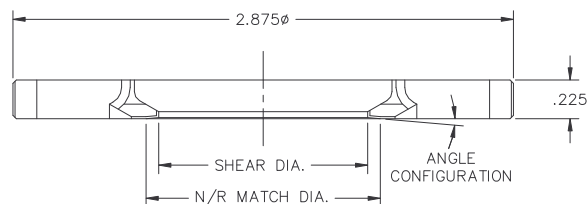
AKS MACHINE INC.

SHEAR STEEL INSERT REFERENCE GUIDE FOR COMMON 38MM PULL UP FINISHES

STD. SNAP/SCREW FINISH CONFIGURATIONS

LIST CURRENT AS OF 6/1/08

IPEC SNAP/SCREW FINISH		NEPCO & PORTOLA SNAP/SCREW FINISH		CONSUMER ALPHA CAP & ALPHA MAX FINISH		CONSUMER ALPHA 5 CAP FINISH			
									
ANGLE	5 DEG.		5 DEG.		10 DEG.		10 DEG. .020 R.		
N/R MATCH	1.345 DIA.		1.400 DIA.		1.345 DIA.		1.386 DIA.		
SHEAR DIA. (IN INCHES)	AKS	UNILOY®	AKS	UNILOY®	AKS	UNILOY®	AKS	UNILOY®	COMPATIBLE BLOW PIN HEAD AKS PART NO. (BOT LOAD)
1.175			13065	51675					40030
1.180	13000	51906							40033
1.182					13090				40002
1.185			13057	51651	13086				40023
1.190	13001	51897	13023	51652	13024	51852	13109		40017
1.195	13002	51878	13020	51689	13040	51853	13111		40016
1.197	13003	51889	13044	51716					40005
1.198			13148						40048
1.200	13004	51887	13022	51690	13029	51862	13110		40018
1.202	13005	51903	13042	51692	13041		13221		40006
1.203					13188		13188		40036
1.204	13006	51905			13134				40024
1.205			13066				13149		40042
1.206	13007	51864	13043	51760	13030	51873	13112		40019
1.207					13126		13127		40007
1.208			13144		13116				40035
1.210	13107		13058	51770			13123		40020
1.212	13108								40008
1.214	13008	51909							40043
1.216	13192		13175						40021
1.218							13214		40045
1.239			13187						
1.240									40022





NOTE: THESE SHEAR STEEL INSERTS ARE DESIGNED TO WORK WITH STANDARD UNILOY® SHEAR STEEL MASTER #52506 / #52534 AND AKS SHEAR STEEL MASTER #20001 / #20002. IF YOU REQUIRE A SHEAR STEEL SIZE NOT LISTED PLEASE CONTACT US FOR ASSISTANCE.

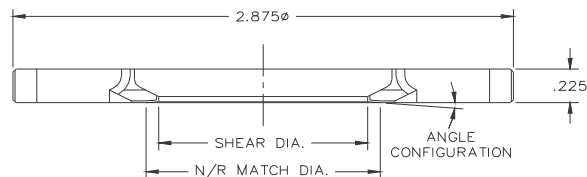
AKS MACHINE INC.

SHEAR STEEL INSERT REFERENCE GUIDE FOR COMMON 38MM PULL UP FINISHES

STD. SNAP FINISH CONFIGURATIONS

LIST CURRENT AS OF 6/1/08

		NEPCO CLEMENT I SNAP FINISH		PORTOLA SC-II SNAP FINISH			
							
ANGLE N/R MATCH		NO ANGLE		15 DEG. .020 R.			
SHEAR DIA. (IN INCHES)		AKS		UNILOY®		COMPATIBLE BLOW PIN HEAD AKS PART NO. (BOT LOAD)	
1.175	13050	51654				40030	
1.180	13059	51557				40033	
1.185	13055	51566				40023	
1.190	13025	51516	13009	51624		40017	
1.193	13064	51527	13010	51656		40015	
1.194			13208			40040	
1.195	13051	51574	13011	51626		40016	
1.197	13060	51671	13012	51599		40005	
1.199			13207			40044	
1.200	13052	51548	13013	51627		40018	
1.202	13061	51545	13014	51592		40006	
1.204	13053	51670	13015	51623		40024	
1.206	13054	51507	13016	51598		40019	
1.207			13143			40007	
1.208			13147			40035	
1.210			13017	51605		40020	
1.212	13062	51642	13018	51719		40008	
1.214						40043	
1.215			13186			40058	
1.216			13223			40021	
1.230	13056	51771				40055	
1.240	13063	51773				40022	






NOTE: THESE SHEAR STEEL INSERTS ARE DESIGNED TO WORK WITH STANDARD UNILOY® SHEAR STEEL MASTER #52506 / #52534 AND AKS SHEAR STEEL MASTER #20001 / #20002. IF YOU REQUIRE A SHEAR STEEL SIZE NOT LISTED PLEASE CONTACT US FOR ASSISTANCE.

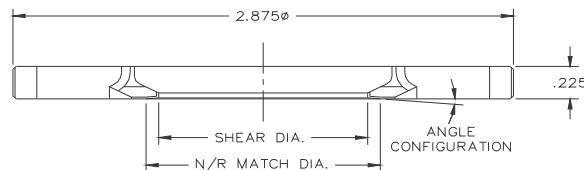
AKS MACHINE INC.

SHEAR STEEL INSERT REFERENCE GUIDE FOR COMMON 38MM PULL UP FINISHES

STD. SCREW FINISH CONFIGURATIONS

LIST CURRENT AS OF 6/1/08

		BERRY CAP FINISH		PORTOLA 358 DBJ FINISH		SCREW FINISH & BLACKHAWK SUPERQUAD & MOD. SUPERQUAD			
									
ANGLE		10 DEG		15 DEG .008 R.		15 DEG.			
N/R MATCH		1.435 DIA.		1.372 DIA.		1.400 DIA.			
SHEAR DIA. (IN INCHES)							COMPATIBLE BLOW PIN HEAD AKS PART NO. (BOT LOAD)		
	AKS	UNILOY®	AKS	UNILOY®	AKS	UNILOY®			
1.190			13133		13026	51550	40017		
1.193			13206		13031	51517	40015		
1.195			13095		13032	51554	40016		
1.197					13028	51555	40005		
1.198			13114				40048		
1.200			13102		13021	51518	40018		
1.201					13037		40041		
1.202			13171		13033	51536	40006		
1.203					13152		40036		
1.204			13195		13145		40024		
1.205					13129		40042		
1.206			13119		13027	51526	40019		
1.208			13174		13034	51519	40035		
1.210			13139		13035	51520	40020		
1.212					13039	51650	40008		
1.214					13189		40043		
1.215					13162		40058		
1.216					13217		40021		
1.218			13140		13215		40045		
1.219					13038		40049		
1.220			13141				40056		
1.226					13036	51899	40046		
1.230	13154						40055		
1.235	13153						40065		
1.240	13068				13106		40022		
1.245	13085						40026		



NOTE: THESE SHEAR STEEL INSERTS ARE DESIGNED TO WORK WITH STANDARD UNILOY® SHEAR STEEL MASTER #52506 / #52534 AND AKS SHEAR STEEL MASTER #20001 / #20002. IF YOU REQUIRE A SHEAR STEEL SIZE NOT LISTED PLEASE CONTACT US FOR ASSISTANCE.